

NEWSLETTER

Our Mission: To enrich the community through the restoration and guardianship of an indigenous Marlborough Sounds wildlife sanctuary, in which the natural ecosystems, native flora and fauna flourish in a predator-free environment that can be appreciated by all.



CHAIRMAN'S COMMENT

It is a real privilege to be charged with the chairmanship of the Kaipupu Sanctuary this year and I hope that I can follow in the illustrious footsteps of those who have gone before me. It continues to humble me, the amount of time, care and attention that our dedicated group of volunteers expends every day of the year on this significant project and I think we all need to acknowledge, that without these people, this project would be a mere shadow of what it has become. Thank you.

And now with a warmer wind and a splash of colour, it is obvious that spring has most definitely sprung. Out on Kaipupu Point there are some early signs of nesting activity and wonderful footage has come through from the motion activated cameras, of the little penguins dragging a large punga frond towards its nest. It's good to see that native flora is still trendy in penguin burrows

this season (despite news reports that kiwiana has become unfashionable). We can only hope that it is a successful season on the breeding front for all our inhabitants and that the bird life flourishes, fingers crossed. Unfortunately the Robins released earlier in the year are proving to be somewhat elusive, however we hope to have a further release in late November to boost their numbers.

Those of you with a keen eye may also have picked up on the amendments we have made to our logo and name. After much discussion, the committee felt that the new logo and the name 'Kaipupu Wildlife Sanctuary' more effectively portrays who and what we represent and is perhaps a little more succinct. We hope you like it as much as we do.

Peter Hamill
Chairman


OCTOBER 2016


IN THIS ISSUE

- Chairman's Comment
- What's a tea tree?
- Sounds, Salmon & Songbirds
- What's on?
- Pest monitoring update
- Farewell Little Kiwi
- Plant & Garage sale


KEEP UP TO DATE

Make sure that we have your email address so you can keep up to date with all the exciting things happening at the Sanctuary. If you haven't heard from us in a while then let us know.

 info@kaipupupoint.co.nz

 www.kaipupupoint.co.nz

 www.facebook.com/KaipupuPoint

 www.twitter.com/Kaipupupoint



WHAT'S A TEA TREE?

Ti/tea tree is the common name we use for manuka and kanuka – but note, ‘ti’ is correctly the Maori name for the cabbage tree, so I’ll use ‘teatree’. As manuka and kanuka were named teatrees after European settlers used them to make tea, I just had to try my own brew! A few kanuka branchlets chopped into boiling water for a minute or two resulted in a pleasant, lightly-minted flavour, but longer boiling produced a darker coloured, less pleasant drink. So, in my experience, it’s something that could do in a push.

Kanuka and manuka look similar but can be easily told apart as follows. Kanuka has smaller flowers, smaller and fewer seeds pods that don’t stay on the tree for long. Kanuka also has softer leaves when squeezed gently, while manuka leaves are pointy and sharper: thus kanuka is kind and manuka is mean.

However, while they may look similar botanists place kanuka and manuka in quite different plant genera (groups of species). Kanuka is a *Kunzea* species and manuka is a *Leptospermum* species. Both have Australian relatives, but Australian tea tree oil comes from a different group again (*Melaleuca* species).

Scientists have had a tough time trying to decide where to place kanuka – current confirmation that it belongs in *Kunzea* rather than with manuka, also has shown that there are 10 different species to be found in New Zealand. One species is only found on Three Knights Islands, another only on Great Barrier Island and another species only occurs close to mudpools and fumaroles.

The kanuka type seen locally (*Kunzea ericoides*) is only found across the top of the South Island. *Kunzea robusta* also occurs but favours colonising disturbed land areas like slips, fires etc, so unlike *Kunzea ericoides* it doesn’t occur in forest.

We know that manuka has antibiotic substances (manuka honey’s SF factor) and both manuka and kanuka have a number of other medicinal properties. It appears that the birds know this too. NZ parakeets have been seen chewing manuka and kanuka leaves, mixing it with preening oil and then spreading it over their feathers. They also chew and swallow the leaves probably to get rid of intestinal worms and other parasites. Not just a tea/ti tree!

More information at: www.nzpcn.org.nz

Contributed by Andrew John



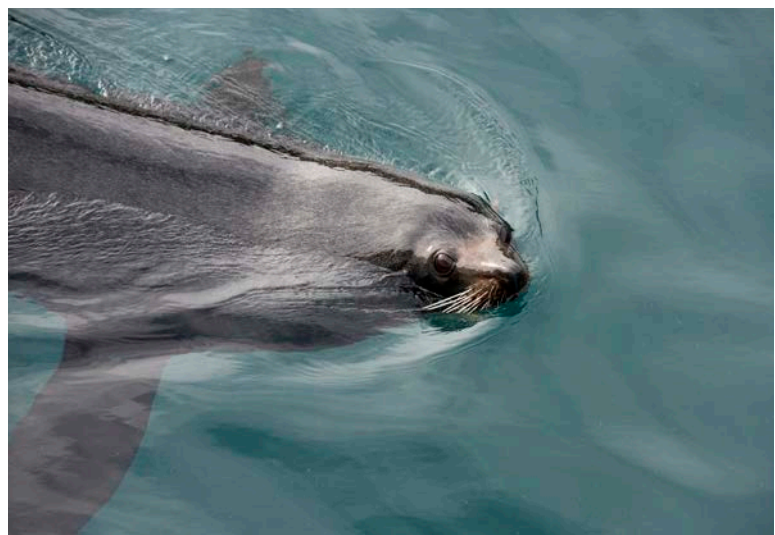


SOUNDS, SALMON AND SONGBIRDS

In late September, under overcast skies the last in a series of three Sounds, Salmon and Songbirds trips took place with over 60 people travelling on board the 20 metre luxury catamaran *Odyssey* from Marlborough Tour Company. Bathing fur seals greeted us as we arrived at our first stop, Kaipupu Wildlife Sanctuary. Guests took time to walk the bush clad hills of the Sanctuary to the northern look out which reveals expansive views across the inner Marlborough Sounds. With careful examination of each sand trap along the way, rowi kiwi footprints were joyfully discovered near the look out.

“ A great way to see the Marlborough Sounds while sampling superb wine and tasty salmon. Can't wait for next year! ”

Once back on board, the tour continued to New Zealand King Salmon's Ruakaka salmon farm at the junction of Queen Charlotte Sound and the Tory Channel. Here guests sampled New Zealand King Salmon and Mud House wines while listening to commentary about the salmon farm. The tour concluded with a scenic cruise back to Picton.



TOP: Sampling salmon while visiting the Salmon Farm.
BOTTOM: One of the locals.

EVENING SPEAKER SERIES

The October evening speaker series was presented by Debs Martin who spoke about Marlborough's Long-tailed Bat.

Marlborough hosts two of the most important populations of the nationally critical South Island long-tailed bat – one of our only 2 bat species and our only land mammal. Since 2008, Forest & Bird, led by Debs Martin, has been identifying the locations of bats across the top of the South Island. Their work led to the identification of a large population on D'Urville Island/Rangitoto kit e Tonga and at Pelorus Bridge Scenic Reserve/Titiraukawa. Upcoming work includes capturing and tagging bats at Pelorus Bridge to identify their roost sites throughout the catcment, and a vision for a Predator Free Pelorus – the survival of bat colonies depends on safe havens of around 5000 hectares or more.

RIGHT: Capturing and tagging a bat at Pelorus Bridge. Photo: Nelson Mail

GARDEN MARLBOROUGH FETE

Coming up on November 6th, Kaipupu Wildlife Sanctuary will have a stall at the Garden Marlborough Fete. We will be selling our popular tshirts featuring the South Island Robin and Rowi kiwi. We also have some great carry bags and much more.

WHEN: 6th November

WHERE: Seymour Square, Blenheim

THE AMAZING ECORACE

The Amazing Eco Race is a cross-country navigational and strategy race on foot, designed for people of all abilities that is similar to an Orienteering-style Rogaine. For more information visit www.amazingecorace.co.nz

WHEN: 13th November

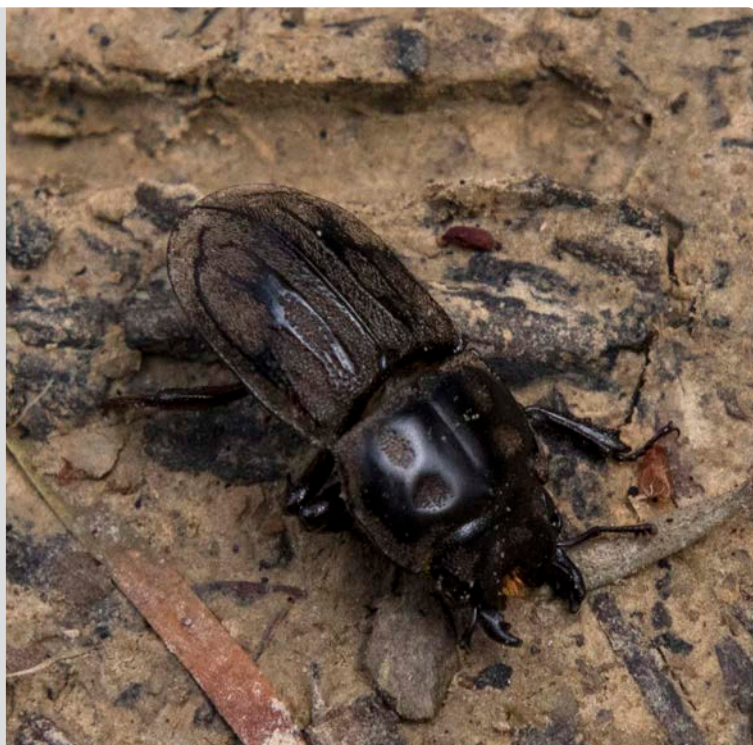
WHERE: Aschworth Farm, 626 Brancott Rd



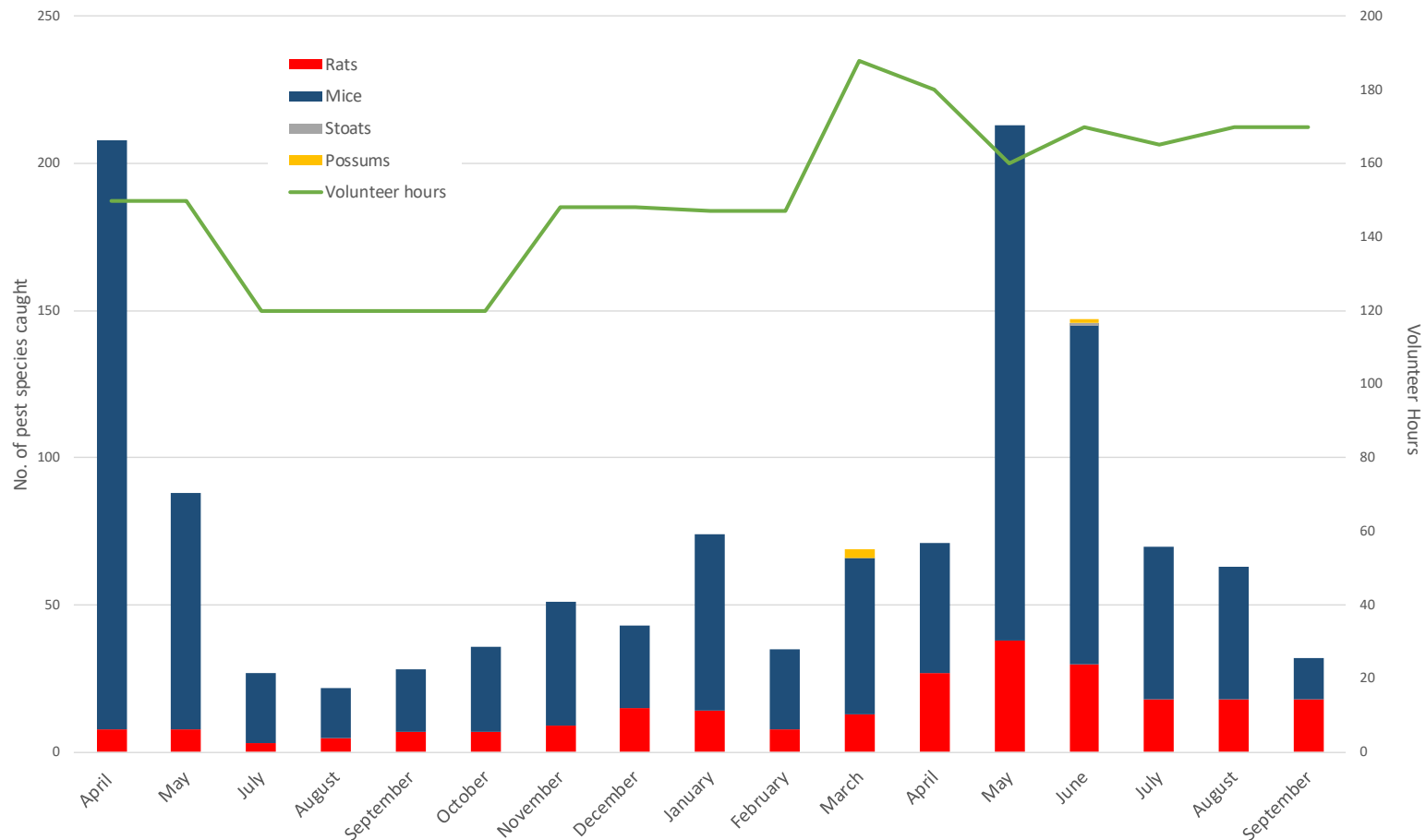
NZ RETICULATE STAG BEETLE

Belonging to a diverse family worldwide, New Zealand has 39 species of stag beetles - 35 of which are endemic. New Zealand stag beetles are inconspicuous and rather cryptic compared to their northern hemisphere cousins which are often large with spectacular tusk-like mandibles. Larvae of these beetles feed on rotting wood.

Have you seen an interesting insect, plant or animal on the Sanctuary, we want to hear from you! Send us a photo....



PEST MONITORING UPDATE



ABOVE: Rat and mice numbers continue to decline as we head into Spring and the installation of extra Goodnature resetting traps are helping to achieve this. Looking forward we can expect to see a rise in rat and mice numbers as food sources become more abundant and breeding begins.

QCC VISIT THE SANCTUARY

Over 200 students from Queen Charlotte College visited the Sanctuary over the week of the 25th of August. Andrew John, our volunteer educator, lead the Year 7 to 10 students with planting native trees in our restoration area on the South side of the Sanctuary. This went well with adult helpers and QCC parents & teachers making the difference. When finished about 440 trees were planted. This was possible thanks to a grant from Pub Charity Limited.





FAREWELL LITTLE KIWI

It is with mixed feelings that we have to say farewell to the nine kiwi chicks that have lived at the Sanctuary for the last six months. They have spent many nights searching the trails around Kaipupu Point for tasty treats and are now big enough to look after themselves in the wild. As part of Operation Nest Egg, this next step sees them return home to the forests of Okarito where they will continue on their journey to find a mate and hopefully breed. On Sunday the 9th of October, the kiwi team from the Department of Conservation visited the Sanctuary to do a final health check before the kiwis are relocated. These checks ensure that the kiwi are healthy enough to be transferred and include vaccinations. This may be farewell for these little kiwi but we expect to have more kiwi chicks arrive early next year. In the meantime make sure to check out the video footage of our kiwi chicks on our website and facebook page.

TOP: Rowi kiwi cuddles

RIGHT (TOP): Refitting the transmitter

RIGHT (BOTTOM): Blood samples to check for any illnesses.





SPRING PLANT SALE & GARAGE SALE

Our bi-annual plant sale and fundraising garage sale were held on the 14th and 15th of October, both events had a huge amount of support and have collectively raised over \$2,000 for the Sanctuary. Thank you to everyone who bought a plant, a pair of chairs or donated a book. We would also like to say thank you to all our volunteers who helped to staff the sales, grew the plants or organised the garage sale. Nozz Fletcher and Robert Davies from Picton Men's Shed deserve a special mention for the effort they put into growing all the trees, shrubs and ground covers which will provide shelter or food for our native birds, lizards and insects.

We also want to mention Shirley Timms who collected, organised and promoted the garage sale, we really appreciate your help!

ABOVE: Nozz promoting the "young gardeners" selection of plants, Robert (background) organising shrubs.

BELOW: Taking a well earned coffee break at the garage sale.



WHAT'S COMING UP?

NOVEMBER

Friday 3rd, 4th & 5th November

Garden Marlborough, Queen Charlotte Sound Experience.

Sunday 6th November

Visit our stall at the Garden Marlborough fete in Blenheim.

Sunday 13th November

The Amazing Eco Race is a cross-country navigational and strategy race on foot, designed for people of all abilities that is similar to an Orienteering-style Rogaine.

Wednesday 16th November

Evening Speaker Series presented by David Melville talking about long migratory birds and Asia

DECEMBER

Christmas is coming and we have some great gift ideas at the shop. Our new kiwi t-shirts will be a hit with every member of the family. We also have signed copies of 'Whisker the kiwi chick' illustrated by local artist Caroline della Porta.



Keep up to date with all our events on our Facebook page!

THANKS TO OUR SPONSORS

FOUNDATION PARTNERS

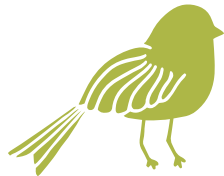


Department of
Conservation
Te Papa Atawhai

RIMU (from \$5,000/year)



KOHEKOHE (from \$300-\$999/year)



DO YOU KNOW A SOMEONE INTERESTED
IN SUPPORTING KAIPUPU WILDLIFE
SANCTUARY?

GRANT FUNDING



HONORARY SPONSORS (recognised for assistance with goods or services)



SPECIAL THANKS TO: Kenny Barging; Le Cafe; Picton ITM; Nigel Hutchinson; Robyn Spence;
Marlborough Helicopters; Fulton Hogan; Jordan Family Trust; Tory Channel Contractors; Outward Bound