

KAIPUPU WILDLIFE SANCTUARY NEWSLETTER

***Our Mission:** To enrich the community through the restoration and guardianship of an indigenous Marlborough Sounds wildlife sanctuary, in which the natural ecosystems, native flora and fauna flourish in a predator-free environment that can be appreciated by all.*

CHAIRMAN'S COMMENT

I was rather humbled to be elected Chairman at the Kaipupu meeting in February when our Chairman, Pete Hamill resigned. Kaipupu has over the last 12 years had the benefit of excellent and visionary chairpersons. Not being of the same ilk, I see my tenure not lasting beyond the next AGM.

Although I have been involved with the Kaipupu Wildlife Sanctuary since its inception, it never fails to amaze me what a dedicated group of volunteers with great vision, the support of funding agencies and the encouragement of the local community, what great local achievements can be obtained. In the earlier days, the volunteers were more involved in the development of infrastructure and of course pest control. This work has provided the foundation for the present sanctuary which is appreciated and enjoyed by so many visitors today.

Elsewhere in this newsletter, there is a list of achievements made in the last couple of months. None of this would have been possible without the effort of a dedicated group of volunteers and supporters. Volunteers undertake pest control to provide a suitable environment to allow juvenile Rowi Kiwi to be brought to the Sanctuary for the second year. A second transfer of South Island Robins has been

undertaken with a large input from volunteers in their capture on Long Island and their subsequent release at Kaipupu.

In addition to the increasing conservation values of Kaipupu there is an increasing number of people wanting to learn about Kaipupu. A significant number of classes from Marlborough Schools are organising visits to Kaipupu, facilitated by a passionate group of volunteers. An increasing number of adult groups are also visiting Kaipupu to appreciate this special area so close to Picton. Often these groups are guided by more volunteers who willingly relate the story of Kaipupu and its environs. Although Kaipupu did not receive any awards at the 2017 Marlborough Environmental Awards at the presentations on the 31st March in the group "Community Innovation" I feel very proud with what our volunteers have achieved over the years. This year was just not our year.

I hope that all our volunteers continue to get satisfaction with their involvement and achievements with Kaipupu and get a lot of pride in with what they have helped to create.

Keep up the good work.

Robin Cox
Acting Chairperson


APRIL 2017


IN THIS ISSUE

- Chairman's Comment
- New robin arrive
- Busy little working bee
- Green thumbs ready
- Those Pesky Pests
- State of the Environment


KEEP UP TO DATE

Make sure that we have your email address so you can keep up to date with all the exciting things happening at the Sanctuary. If you haven't heard from us in a while then let us know.

 info@kaipupupoint.co.nz

 www.kaipupupoint.co.nz

 www.facebook.com/KaipupuPoint

 www.twitter.com/Kaipupupoint


KAIPUPU
WILDLIFE SANCTUARY
PICTON - MARLBOROUGH - NZ

SOUTH ISLAND ROBIN 2017 TRANSLOCATION

The quiet hops of a South Island robin follow us as we walk through the forest on Long Island. The desire to gather newly disturbed worms and insects means they come within centimetres of our boots.

A South Island robin atop a transfer box at Long Island in the Marlborough Sounds

PHOTO: RACHEL RUSSELL



A year after our first South Island robin translocation, nine enthusiastic volunteers travelled to Long Island once more. Led by Bill Cash and Dianne John, and with support from the Picton Department of Conservation, our day started early with quarantine checks. This important first step ensures that pest animals, plants and diseases are not accidentally transported to the pristine island. Once completed, our gear was loaded onto DOC's boat "Waitohi" and the smooth trip from Picton to Long Island passed quickly. As we arrived at Long Island, the constant calls of the kakariki, bellbird, tui and saddleback echoed around the small landing area and two curious South Island robin

welcomed us, scratching around our feet for food. It was at this point that I was reminded of what we are missing on the mainland. Not just the intensity of calls but also the incredible variety in calls, it was truly spectacular.

After climbing the steep bush clad hill, we set up the banding station and two teams ventured in opposite directions to catch robins. The "trap" is something reminiscent of a Tom and Jerry cartoon. A square wire cage is propped up with a stick and a string is attached to the stick which is pulled once the robin hops under the cage. Live meal worms provide the lure. Male robins are a little more fearless and were easily caught, while females often took

much longer to catch, if at all in some cases.

Once the robin were caught they were banded by Bill and Dianne, using a combination of colours to identify individual birds. Four hours later and 27 robin were caught and banded.

Back at Kaipupu Wildlife Sanctuary the robin were released in two places to encourage the birds to spread out across the island. We expect that the new robins will be a little shy at first but we look forward to hearing their calls across the Sanctuary and seeing more of them as time passes. If you are out at the Sanctuary and see a robin, let us know the colour combination of the bands and where you spotted it.



ROBIN SPOTTING

Bands are read top to bottom, with metal bands on left leg of females and right leg of males.

LEFT: Left leg is red then metal, which means that it is a female and right leg is dark blue/red

RIGHT: Left leg is red and purple, right leg is hidden. This bird is a male.

RIGHT: Placing the bands on a South Island robin is a specialist job, Bill Cash is assisted by Dianne John. (Left to Right): Siobain Browning, Dianne, Bill and Alistair Boyce

BELOW: Each robin has a unique combination of coloured and metal bands. Metal bands are placed on the right or left leg depending on their sex, left for females and right for males.



SOUTH ISLAND ROBIN TSHIRTS



Adults t-shirts available in grey (pictured) and also available in green - \$35 each (\$30 for members).



Children's t-shirts available in light blue, pink and green - \$25 each (\$20 for members)





BUSY LITTLE WORKING BEE

The drizzly weather didn't stop a keen bunch of volunteers from completing a range of maintenance tasks on Kaipupu Wildlife Sanctuary in late March.

With our primary focus on pest control and monitoring many of the day to day maintenance tasks are left up to a small team of three to four people. Sometimes the 'to do' list can get very long and this is where working bees are great to get lots of projects finished on one day.

On March 25th, forty five people joined us on Kaipupu Wildlife Sanctuary to tidy up the walking tracks, trim back trees, replace sand in our monitoring stations and remove weeds. With the promise of a BBQ lunch, all of the jobs were completed quickly. The highlight for many of our volunteers was seeing our new robins who followed those raking paths, eagerly waiting for an insect-y treat. Support from local businesses is vital to running these types of events and we would like to thank Beachcomber Cruises for providing transport to the Sanctuary, and to Freshchoice Picton, Mud House Wine and New Zealand King Salmon for providing food and drinks for the BBQ lunch.

SUPER SPONSORS

Community support is one of the Sanctuary's biggest assets and we are very grateful to all our members, volunteers, sponsors, donors and granting agencies. Recently Marlborough Gold Honey became a Kohekohe sponsor. Encouraged by our work to control wasps in the Picton and Waikawa area, James Jenkins owner of Marlborough Gold Honey saw the benefit of this programme for his bees in Shakespeare Bay and decided to become a sponsor of the Sanctuary. As a sponsor it is the "feel good" factor of giving back

to society that appeals to James.

Prior to last month's working bee, slips along the volunteer entrance path were cleared by TST Contracting. Owner, Clayton has been a long term supporter of the Sanctuary helping to create the main walking path on the Sanctuary. As our way of saying thank you, TST Contracting has been made an honorary sponsor. We are very pleased to welcome Marlborough Gold Honey and TST Contracting to the Kaipupu team.

GREEN THUMBS READY

Robert (left) and Nozz working hard at the Picton PowerHouse Herb and Native Nursery to get plants ready for the biannual plant sale in late April.



PLANTING FOR BIRDS, LIZARDS & INSECTS

Birds will travel large distances in search of flowers and fruit especially over winter and spring. Trees and shrubs that provide fruit or nectar for birds include titoki, wineberry, griselinia, kanuka, kowhai, kakabeak, flax and tree fuchsia.

Lizards prefer thick ground cover with lots of places to hide, they also like plants that produce nectar or berries. Top plants for lizards include manuka, kanuka, tussock, muehlenbeckia, coprosma and mingimingi.

Hebes, muehlenbeckia and houhere provide food for native butterflies. Tree weta prefer the softer leaves of mahoe and karamu.

By planting the right tree or shrub in your garden you can encourage birds, lizards and insects to take up residence. Native plants provide an excellent food source for these animals but they also provide shelter from the sun, rain or predators meaning they are the perfect place to live.

The team at the newly named Picton PowerHouse Herb and Native Nursery have been working hard to get a range of native trees, shrubs

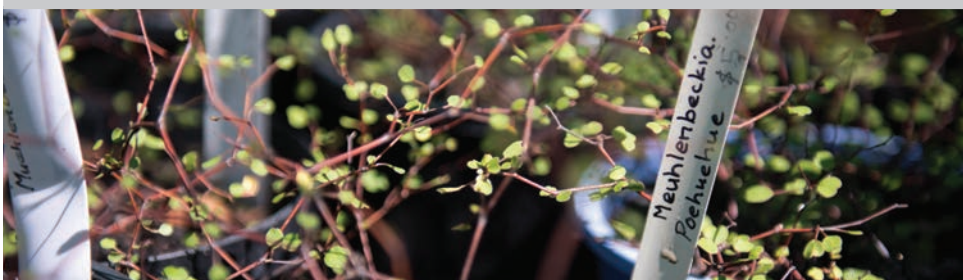
and groundcovers ready for the Autumn Plant Sale. Exotic trees like bottlebrush, banksia and grevillea will also be available and provide a great source of food for nectar feeding birds when native trees aren't flowering. Nozz has also got a collection of smaller plants for young gardeners.

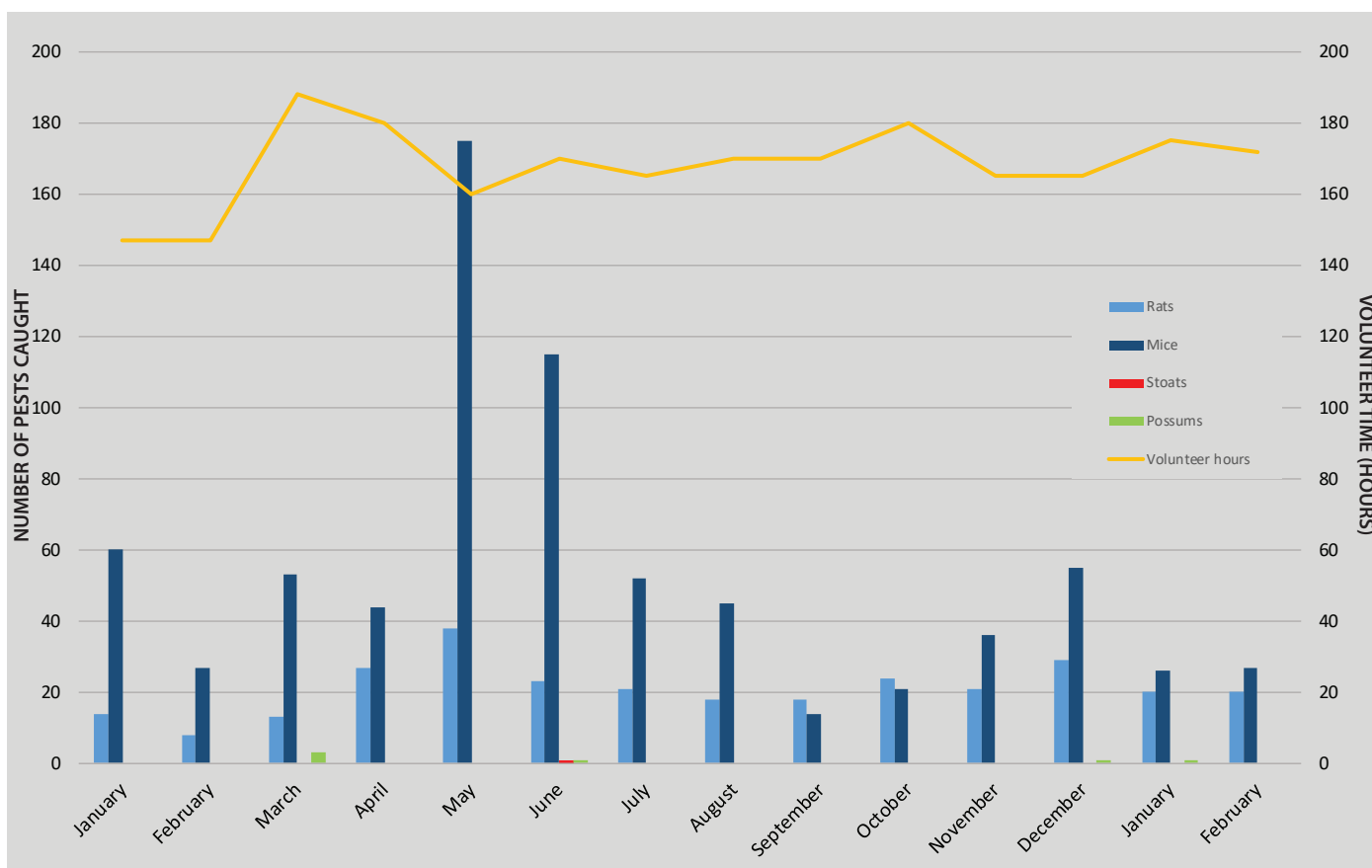
AUTUMN PLANT SALE

*Fri 28th and Sat 29th April, 9am - 5pm
Kaipupu Shop, Mariners Mall*

WHO EATS WHAT?

	Fruit	Foliage	Nectar	Insects	Other
Bellbird	X		X	X	
Fantail				X	
Grey warbler				X	
Kererū	X	X			Flowers
Kingfisher				X	Lizards, small rodents
Shining cuckoo				X	
Ruru/Morepork				X	Small rodents, birds, lizards
Tūī	X		X	X	
Silvereye	X		X	X	
Geckos/Skinks	X		X	X	
Admiral Butterfly		X	X		
Tree Weta		X		X	





THOSE PESKY PESTS

The year is flying by and we are now heading into autumn where we expect catch numbers to increase. With cooler temperatures and lower food resources mice and rats will be looking for other sources of food and the bait in our traps becomes more appealing.

Our current catch numbers are remaining relatively stable and a visit from a trained stoat detecting dog in February confirmed we are

100% stoat free.

The close proximity of the Sanctuary to other areas of land means that reinvasion is a constant battle. In many cases, invasion by pests is via the water. Norway rats for example are excellent swimmers and can swim up to one kilometre in distance. This highlights the importance of controlling areas around the Sanctuary. Thanks to the efforts of Picton Dawn Chorus around Picton and Waikawa we are gaining a protective halo around the Sanctuary which will mean that reinvasion is less likely. This halo

will also mean that in the future birds that leave the Sanctuary will have a safe place to call home. If you want to help out with pest control on Kaipupu Wildlife Sanctuary visit our website www.kaipupupoint.co.nz for more information or contact Trudy kaipupupestmonitoring@gmail.com

We are also looking for volunteers to join our weed whacking team, this will involve removal of weeds across the Sanctuary including Old Man's Beard, Sycamore and more. For more information contact Rachel admin@kaipupupoint.co.nz



KAIPUPU SHOP

The shop is open four days a week (Monday, Tuesday, Thursday & Friday) from 9am until 3pm. There is a great range of products that help support the Sanctuary as well as informative displays. Find us in Mariners Mall.

WHAT WE REALLY THINK ABOUT THE STATE OF THE ENVIRONMENT

A triennial Lincoln University survey reveals what the average New Zealander really thinks about the state of our environment in 2016. Over time the aim is to measure, analyse and monitor changes in perceptions and attitudes in relation to a range of environmental issues. Special topics for 2016 were based around mammalian predator control, conservation in general and priorities for introduced species management. The majority of survey respondents (70%) were involved with environmental activities at home (recycling, limited electricity use, composted, grown vegetables) with only 28.5% of people involved with projects to improve the natural environment and slightly less participating in environmental organisations (24.9%) or as active members of groups that restore or replant natural environments

(13.1%). These numbers are on the rise compared to previous years, but is this due to an increase in awareness around the state of our environment? The results of this survey suggest perhaps not. The condition of our native plants and animals was seen to be adequate to good by the majority of respondents but with over 2700 threatened or at risk species (2012 DOC information) in New Zealand the reality is that our natural biodiversity is anything but good. The researchers theorised that “good news” stories about endangered species may mask the “gravity of the biodiversity situation” in New Zealand for many. A lack of time was the top reason that people were not involved with environmental groups, followed closely by fitness limitations. Time is also a factor in why people aren’t

visiting their local national parks. However, conservation in general is definitely seen as important. Involvement with pest control was much higher at home but there was strong support for increases in control of possums, rats, stoats and ferrets in a wider context. The take away message was that facts and perceptions need to be aligned and that to achieve a predator (pest) free New Zealand by 2050, community based conservation groups need support with government policies developed to ensure the success of these environmental activities.

To read the full report visit www.lincoln.ac.nz/Documents/LEaP/perceptions2016_feb17_LowRes.pdf

UPCOMING EVENTS

28th and 29th April - Autumn Plant Sale

A huge selection of plants to attract native birds, lizards and invertebrates to the garden.

June 2017 - Annual General Meeting

Our annual meeting with a summary of the years achievements, everyone welcome.

CONTACT US

WEB www.kaipupupoint.co.nz

EMAIL info@kaipupupoint.co.nz

www.facebook.com/KaipupuPoint

www.twitter.com/Kaipupupoint



VISITING THE SANCTUARY

It is free to visit the Sanctuary. Access is by boat only. You can take your own boat out there or travel with one of the local water taxi companies. These trips range in price from \$20 - \$50 return. You can also access the Sanctuary by kayak.

THANKS TO OUR SPONSORS

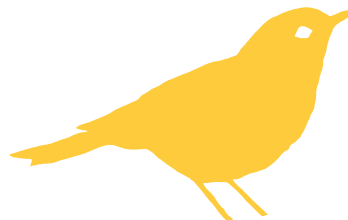
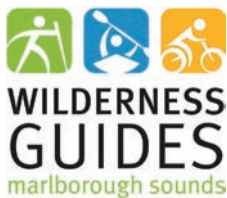
FOUNDATION PARTNERS



RIMU (from \$5,000/year)



KOHEKOHE (from \$300-\$999/year)



DO YOU KNOW A
SOMEONE INTERESTED
IN SUPPORTING KAIPUPU
WILDLIFE SANCTUARY?

GRANT FUNDING



Rātā
Foundation



MARLBOROUGH
DISTRICT COUNCIL

HONORARY SPONSORS (recognised for assistance with goods or services)



TST Contracting



SPECIAL THANKS TO: Kenny Barging; Le Cafe; Picton ITM; Nigel Hutchinson; Robyn Spence;
Marlborough Helicopters; Fulton Hogan; Jordan Family Trust; Tory Channel Contractors; Outward Bound