



Kaipupu Point

Sounds Wildlife Sanctuary

PO Box 186, Picton, 7250, New Zealand
kaipupupoint.co.nz



Newsletter April 2015

Mission: To enrich the community through the restoration and guardianship of an indigenous Marlborough Sounds wildlife sanctuary, in which the natural ecosystems, native flora and fauna flourish in a predator-free environment that can be appreciated by all.

Bird-Friendly PLANT SALE

For plants to attract native birds to your garden!

Friday 1st May 10 am – 4 pm at the Kaipupu Point Information Site

Saturday 2nd May 10 am – 4 pm Mariners Mall, Picton

Can you help for an hour or so? If you can phone Alison and Nozz on 573-7226



TEN YEARS – AND WE'VE ONLY JUST BEGUN!



A happy jetty full on the 10 year celebration cruise to Kaipupu Point.

Chairman's Comment

A comment from our recent Kaipupu Point evening lecture speaker, Des Smith, a long time guide at Zealandia, Wellington*"Children who have early contact with nature, grow up as better balanced individuals in later life"* I totally agree. It's why education remains a core objective in our strategic plan. It's why the work of our educator, Andrew John is so important. There will always be those who walk around Kaipupu Point and never see or appreciate a thing. But others will question, will wonder, will appreciate, and will grow with an enquiring mind, which their Kaipupu Point experience may well have contributed to. It's a lofty ambition to seek to positively influence young people, but we have the opportunity to do so, and will continue to make this an important objective.

It's good to be reminded of this as we enter our 10th year of Kaipupu Point existence.

By any measure it's been a most successful and gratifying 10 years. An ambitious initiative from Port Marlborough and DOC, sound leadership and management from year 1, committed committees, a real community buy in and preparedness by many to do the 'hard yards'...without personal acknowledgement or recognition.

So it was a great joy in March, to welcome some 150 local friends, supporters and dignitaries to our 10th anniversary celebration on the peninsula. We were extremely grateful that Beachcomber provided free transport for all on the day. The weather was beautiful, the mood was festive, and the spirit was great....aided by the announcement of Kaipupu Point winning the '*Landscape and Habitat Enhancement*' award at the previous night's excellent Cawthron Marlborough Environment awards. Contributions from the previous 2 chairpersons gave us all an insight into the challenges which the ambitious project presented in the early days...and the bold decision making which was needed back then. The day was completed with a track walk for all, a BBQ, and anniversary cake....all watched over by a large kereru, eating coprosma berries from above us, and seemingly oblivious of the chatter and noise below. It was a salient reminder of why we do what we do., and a motivation to keep on doing it.

Barry Maister

Des Smith wows a capacity crowd contributed by Nozz Fletcher

Real progress is being made towards a pest free NZ and nowhere more so than in Wellington. Kaipupu Point friends were inspired recently by a Zealandia Sanctuary volunteer - guide, weedbuster and native plants enthusiast, Des Smith. Radiating out from Zealandia is 'The Halo Project' - people and groups creating bird friendly havens on public land and in their backyards, to welcome the increasing number of native birds spilling over from Zealandia, and Des is fully involved.

Wherever Des sees some derelict or neglected land he plants it out with natives, cajoling others to help. A litter/weed infested dump of a railway station is now a beautiful garden. The entrance to the Te Araroa Walkway and Bell Gully Reserve likewise. Des is even tackling the railway weed corridor with his band of eco-warriors. They have learnt the train time table and when to hide behind the natives they've planted when the trains come! Up the road from Zealandia at Crofton Downs a young man has enthused the whole village to become pest free and profuse with bird, insect and lizard friendly gardens. They are already being visited by large numbers of tuis and kakas never seen for years in some areas. We learnt that not only are miro dependent on wood pigeons to disperse and fertilise their seeds but lizards and wetas also help germinate the many dense contorta native plants that birds can't access. And guess who eats lizards and weta - hedgehogs and cats!

Kaipupu Point wants to emulate Des's dream in Picton and Waikawa. On Friday May 1st at the Kaipupu Point Information Site in High Street and Saturday May 2nd in the Mariners Mall, they are holding a huge plant sale of bird attracting plants to encourage the "Good Neighbours" of Kaipupu Point to make their own haven.

The Tree (and grand children) Huggers Alison and Nozz Fletcher

Alison and Nozz with whanau on Nozz's 80th birthday



As we continue to get to know our volunteers a little more, it's time to have a chat with Alison and Nozz Fletcher:

In 1985 as a full-time teacher, solo mum with seven children, three of her own and four from orphaned family friends, the last thing Alison needed was Nozz - a forlorn solo father, part time publishers rep/actor with two teenage rascals, to land on her lap. But she more than coped. In 1988 they pushed the last of their broods out of their Parnell nest, and settled on an old man gorse clad hill in Waikawa Bay looking down Queen

Charlotte Sound. They built an eco energy efficient home and twenty five years later moved on to a pocket handkerchief flat section in Rohe Drive, leaving their hill with winding paths zig-zagging down under regenerating bush.

From the time Nozz ran the Ellerslie Steiner School Herb Stall and propagated and sold native trees for a Coromandel beach and harbour environment group, he has loved to get his hands in the potting mix. Together they have planted all over New Zealand - mainly for friends and family. A restaurant in Martinborough, a kindergarten in Lyall Bay, homes in Palmerston North, Thames, Milford, Ohaupo, Blockhouse Bay, Tairua, Keri Keri, Muriwai, Nelson, Waikawa School, Picton Powerhouse Reserve, Seaview Trust. For many years they ran plant stalls at Mariners Mall, the Redwood, Over the Tracks, Mistletoe and Farmers' Markets, raising money for various organizations. And now Kaipupu Point Sanctuary.

The dream is to encourage the planting of bird friendly plants all over Picton and Waikawa, whether natives like kaka beak, kowhai and the smaller early flowering flax *cookianum* or the nectar rich non-natives - banksia, bottlebrush

Email: info@kaipupupoint.co.nz Ph 027-8982517 twitter.com/kaipupupoint www.facebook.com/KaipupuPoint

and *griselina*. The Halo Effect. It's not that we want everyone to be saints – just good neighbours to the birds that are spilling over from the Sanctuary in search of food and shelter for their increasing unpredated progeny. It's mainly bellbirds and tuis now. Their melodious song is increasing as 100 dedicated Kaipupu Point volunteers constantly guard the Sanctuary from invasion by mice, rats, stoats, possums and wild cats. Soon they will be joined by robins, later saddlebacks and, in the long term hopefully, kiwis and other rare endangered taonga such as tuatara.

Kaipupu Point was awarded \$500 in plants in the Cawthron Institute Marlborough Environment Awards, courtesy of our long-time supporters Morgans Road Nurseries. These have been greatly supplemented with plants raised by Andrew John, Nozz and good neighbour, The Picton Men's Community Shed. This huge plant sale will be held in front of The Kaipupu Point Shop (and our good neighbour shops) on Friday May 1st, and in the Mariners Mall Saturday May 2nd. Be there. Buy a plant or two also for your good neighbour!

Footnote: Craig Potton in his recent “Wild Coasts” TV series, stayed overnight with DOC's Bill Cash at predator free Motuara Island to hear the dawn chorus. He quoted Joseph Banks who wrote this after hearing the dawn chorus when the Endeavour stayed at Ship Cove:

“This morn I was awakd by the singing of the birds ashore, - - - the numbers of them were certainly very great who seemd to strain their throats with emulation perhaps; their voices were certainly the most melodious wild musick I have ever heard, almost imitating small bells but with the most tuneable silver sound imaginable - - -”

17th January 1770 in Ship Cove

Eco-sourcing – what does that mean for us?

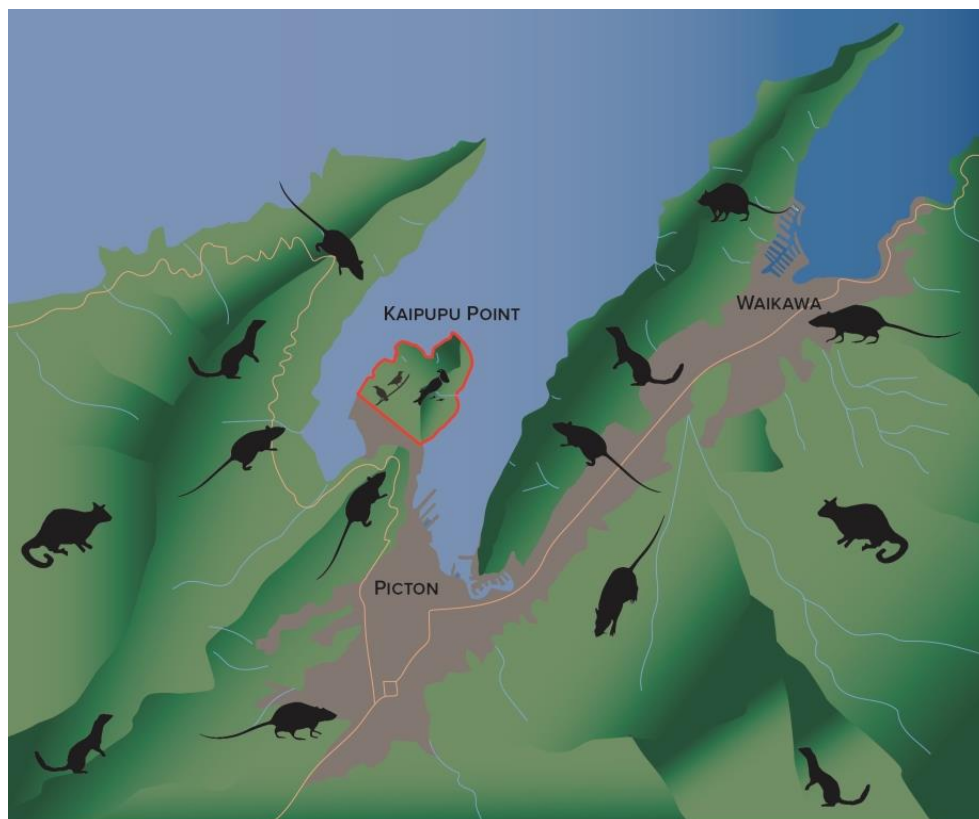
Eco-sourcing refers to the propagation of native plants from local areas and the planting of them back within the same region. This is to avoid ‘genetic pollution’ – mixing genes between different varieties – so only seeds taken from plants growing in the vicinity should be grown.

Eco-sourcing is often used in restoration projects because locally sourced plants are thought to be more likely to survive than those from further away. This is because species are often better adapted to local conditions. On Kaipupu Point we follow this strategy and only plant plants from the Sounds Ecological District.

Source: New Zealand Plan Conservation Network

Why do we need a ‘halo’ protecting Kaipupu Point?

Take a look...



Artwork by Peter Hamill

Who eats what?

Birds eat different foods – take a look and see who is eating what.

Species	Fruit	Foliage	Nectar	Insects	Other
Bellbird	X		X	X	
Fantail				X	
Grey warbler				X	
Kereru	X	X			Flowers
Kingfisher				X	Lizards, small rodents
Shining cuckoo				X	
Ruru/Morepork				X	Small rodents, birds, lizards
Tui	X		X	X	
Wax/White/Silvereye	X		X	X	

Bird friendly trees for your garden

Many native trees, shrubs and climbers look attractive in the garden and also provide shelter and food for wildlife. Lots of information about what to plant for a bird friendly garden is available at the Kaipupu Point Information Site in Picton. We've had a number of questions about larger trees – so here's just a few examples of trees which will grow around 1.5m to 6m high. For loads more information about all shapes and sizes of plants come along to the Kaipupu Point Information Site in High St, Picton. Open Saturdays 11 am to 1pm.

<i>Aristotelia serrata</i>	wineberry	deep red fruit
<i>Brachyglottis repanda</i>	rangiora	yellow flower
<i>Coprosma rhamnoides</i>	coprosma	crimson fruit
<i>Coprosma robusta</i>	karamu	orange/red fruit
<i>Coprosma grandifolia</i>	kanono	orange fruit
<i>Cordyline indivisa</i>	mountain cabbage tree	cream flower
<i>Leptospermum scoparium</i>	manuka	white/pink flower
<i>Marcopiper excelsum</i>	kawakawa	orange fruit
<i>Myrsine australis</i>	mapou	black fruit
<i>Phormium tenax</i>	NZ flax	yellow flower
<i>Pseudopanax laetus</i>	five finger	black fruit
<i>Sophora microphylla</i>	kowhai	yellow flower

Cawthron Marlborough Environment Awards

The Cawthron Marlborough Environment Awards are held every two years and were established in 1997 to celebrate and showcase businesses or community projects that are good for the environment. The awards showcase efforts in Marlborough to enhance and protect the environment and use resources and energy efficiently. It is an opportunity for entrants to share their knowledge and experience and get



independent feedback from the judges on what they're doing and what could be improved. In the Landscape and Habitat Enhancement Award section Kaipupu Point was named winner last month. The judge's report on the Kaipupu Point project detailed the key achievements, problems that have been encountered along the way and how they have been tackled, and the many innovations that have resulted from volunteer efforts. The judges concluded that "The Kaipupu Point project connects very well with the community on all levels and has excellent communication and on-going support". **Well done volunteers!** The group of volunteers pictured above received the honour on behalf of the hundreds of volunteers involved in the project. As well as the honour of being named as the winner, Morgan's Road Nursery donated a voucher for \$500 of plants to Kaipupu Point, and a cash award of \$500 was also presented.

Did You Know?

An estimated 25 million native birds are killed each year by predators.

To Plant a Tree... a simple 4 step guide

Lots of time and money goes into producing trees for planting so we want to make sure that when they go in the ground they are given the best chance to survive/to thrive. 4 simple steps:

- 1) Plant into damp ground
- 2) Dig a hole bigger than the plant you are planting
- 3) Compact the soil around the plant so there are no air pockets
- 4) Aim to make the soil level with the top of the root ball. If it is lower than the plant, water can pool there. If the roots are exposed above the soil, they can act as a wick and dry out in the sun and wind. If you are on a bank it doesn't hurt to have a small hollow for water to accumulate.

See this video https://www.youtube.com/watch?v=ISH_WMCXgHE&feature=youtu.be

We need your CREATIVITY!

We are looking for original artwork or photographs that explore Marlborough's native flora and fauna. We know there is a huge wellspring of artistic talent out there and we are looking for images and artwork of native bush, birds, fungi, invertebrates (the field is wide open) that can be used for a variety of purposes for the Sanctuary – such as educational programmes in schools, displays in the Kaipupu Point Information Site, or even to use on various products to promote and raise funds for Sanctuary operations.

Vee Haddy won our last competition with this stunning kereru photo pictured on the right.

Send your entry in, help us out, and see what you might win.



Mystery prizes will be announced. The competition is open to everyone, whether you are a member of Kaipupu Point or not, so tell your friends, neighbours and workmates all about it. There are 4 categories: Photos Children (up to age 13) and Artwork Children (up to age 13) and Photos Adults (14 + years) and Artwork Adults (14 + years). Prizes will be awarded in each category. **Send your entries to info@kaipupupoint.co.nz.**

Terms and Conditions: The competition ends June 30th 2015. All images entered into the competition may be used by KPMIS to promote Kaipupu Point Sounds Wildlife Sanctuary. Photographer/artist will be attributed.

Pushed for space? Try container gardening!

If you have limited space for big trees in your garden, try growing plants in containers, e.g. titoki, broadleaf and cabbage tree. Some shrubs like kakabeak can even be shaped to fit in with your garden design - but make sure you allow them to flower so the birds benefit.

Sharing the love of birds at the Kaipupu Point Information Site



India, Alethia and Zion Cooper with Dido Harper on a recent Saturday morning at the Kaipupu Point Information Site

Warning! Have you seen this on the Sanctuary?



It could be the abominable grassman? Or a previously undiscovered species?
Turn the page to find out...



Or one of our keen volunteers out there maintaining the Sanctuary track?

Thanks to Nicky Jenkins for these memorable photos

Kaipupu Point AGM – Save the Date – Sunday June 21st, 2-4 pm

Port Marlborough Pavilion at Endeavour Park

Remember the new membership prices when you send in your renewal:

Single Membership \$25 - Family Membership \$40 - Couples Membership \$40 - Individual Lifetime \$300 - Couple Lifetime \$500

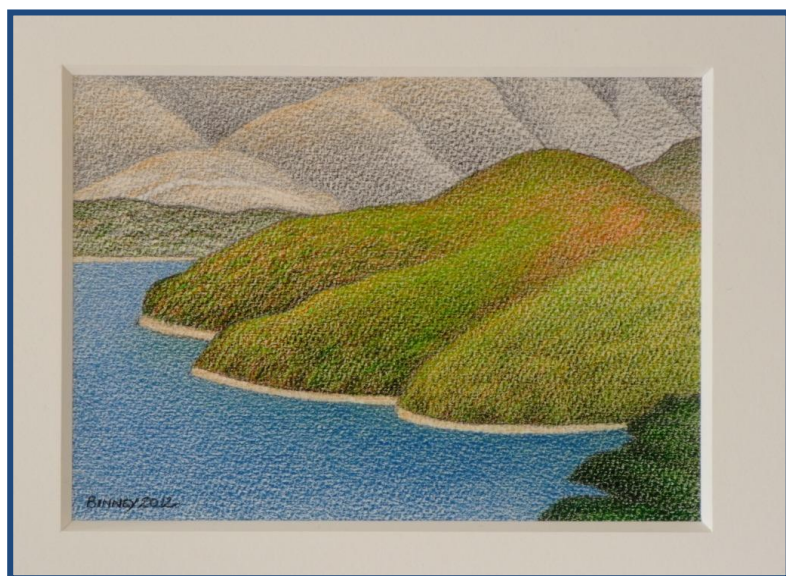
Charity lunch & live auction: Gibbs on Godfrey on May 4th

Tickets are still available for this event, which includes a live auction featuring a gift from Don Binney of a drawing of Kaipupu Point. In

colour pencil on heavy toothed watercolour paper, this work was 1 of 2 that he donated to Kaipupu Point to help raise funds for the Sanctuary. Don Binney's strong and potent paintings speak eloquently about New Zealand and this would be a real treasure to own.



Phone bids and absentee bids for the auction will be accepted on the day, just make contact with Liz@gibbs-restaurant.co.nz prior to the event.



Share with your friends – a huge fundraiser for Kaipupu Point:

Why: Charity lunch & live auction in aid of Kaipupu Point Sounds Wildlife Sanctuary.

What: Three course lunch featuring the finest Marlborough produce and wines.

Who: Matt Lambert from The Musket Room, New York and Bradley Hornby from Gibbs on Godfrey

When: 1pm, 3 May, 2015

Where: Gibbs on Godfrey, 36 Godfrey Road.

Cost: \$200 per person.

Limited tickets available now from

www.orakingsalmon.co.nz/mattgoeswild

PHOTO FINISH



Previous Kaipupupoint Committee Chairs Alan Izard and Juliet Gibbons slice the 10 year anniversary cake



Please Support our Sponsors

RIMU (\$5,000 per annum)



KAHIKATEA (From \$1,000 to \$1,999 per annum)



FUNDERS



FOUNDATION PARTNERS



HONORARY SPONSORS (recognised for assistance with goods or services)



SPECIAL THANKS TO: Kenny Barging, Le Café, Picton ITM, Nigel Hutchinson, Robyn Spence, Marlborough Helicopters, Fulton Hogan, Jordan Family Trust, Tory Channel Contractors, Outward Bound.